

Evolving KDE

How we figured out what we want to do together

Lydia Pintscher - @nightrose

[de.comp.os.linux.misc](#) >

New Project: Kool Desktop Environment. Programmers wanted!

94 posts by 59 authors  



Matthias Ettrich

10/14/96



New Project: Kool Desktop Environment (KDE)

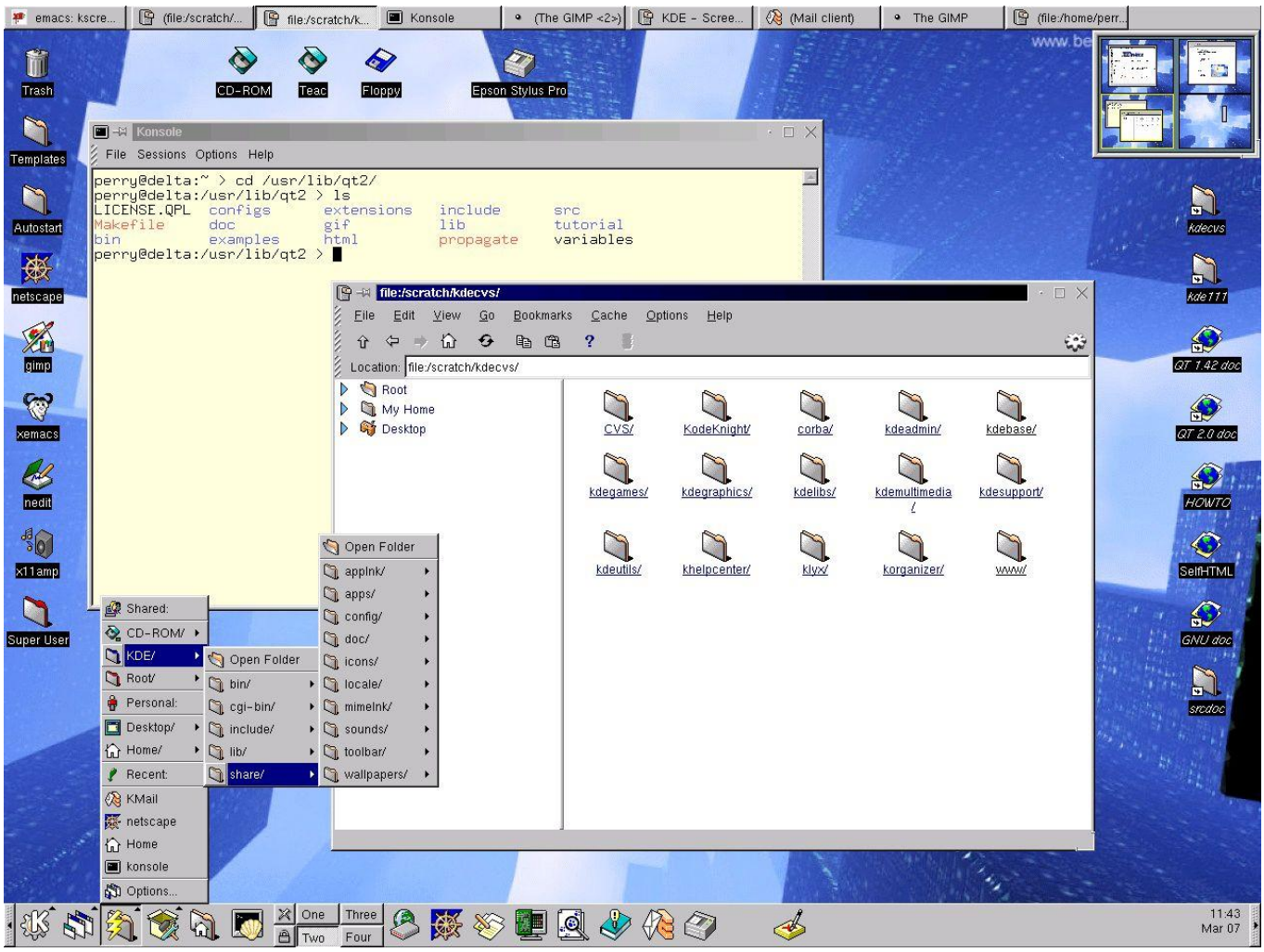
Programmers wanted!

Motivation

Unix popularity grows thanks to the free variants, mostly Linux. But still a consistant, nice looking free desktop-environment is missing. There are several nice either free or low-priced applications available, so that Linux/X11 would almost fit everybody needs if we could offer a real GUI.

A GUI for endusers



The idea is NOT to create a GUI for the complete UNIX-system or the System-Administrator. For that purpose the UNIX-CLI with thousands of tools and scripting languages is much better. The idea is to create a GUI for an ENDUSER. Somebody who wants to browse the web with Linux, write some letters and play some nice games.





K Kandalf's useful tips

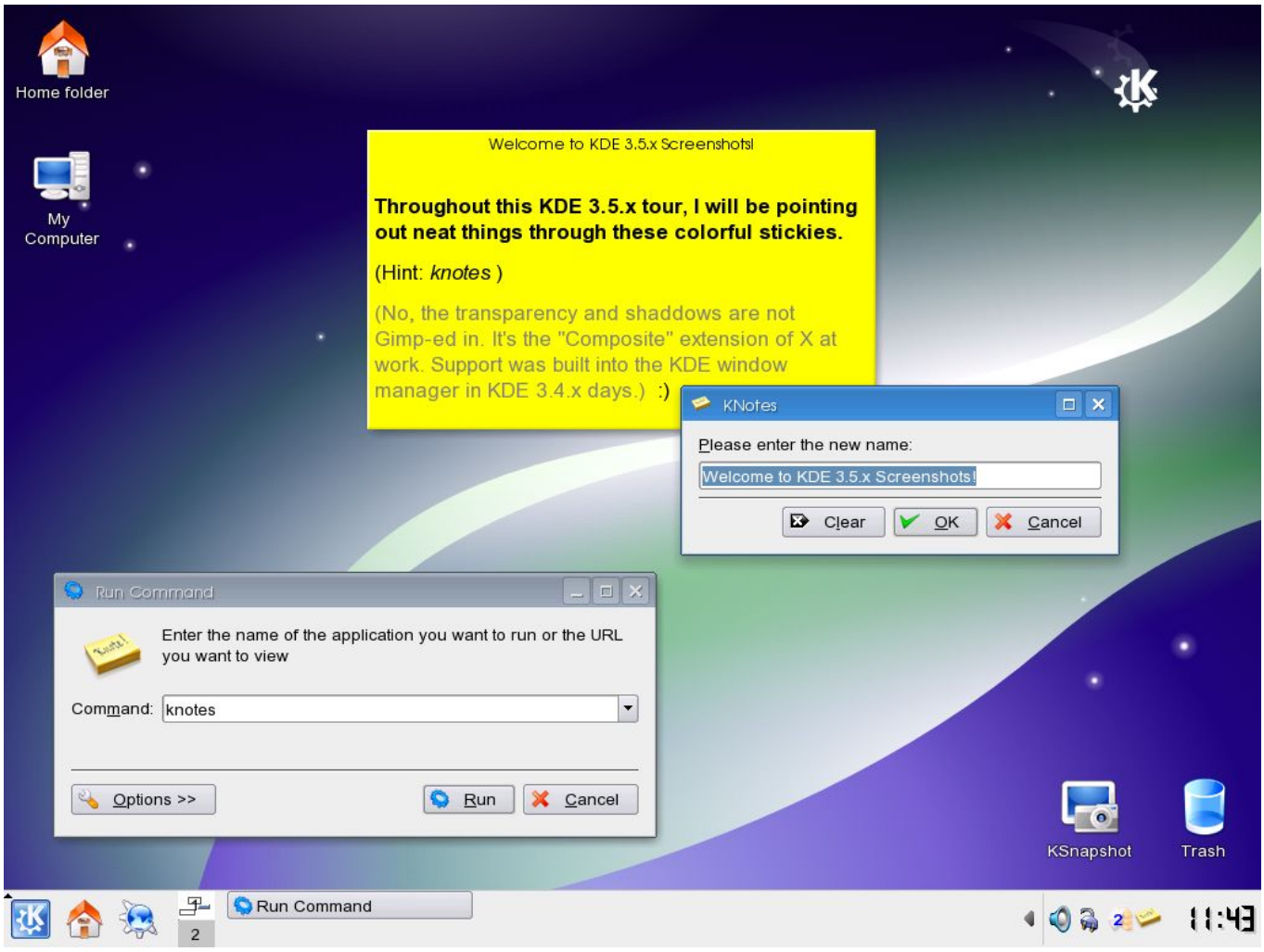
The program klipper, which is started by default and resides in the system tray at the right end of the panel, keeps a number of text selections around that you can retrieve or even (e.g., in the case of URLs) execute.



Run on startup

Previous Next Close

The dialog box has a title bar with a blue gradient and a close button. The main content area is split into two columns. The left column contains text and a small icon of a clipboard with a 'K' on it. The right column contains a cartoon wizard character in a blue robe and hat, holding a wand. At the bottom, there is a checkbox for "Run on startup" which is checked, and three buttons: "Previous", "Next", and "Close".



Home folder

My
Computer

Welcome to KDE 3.5.x Screenshots!

Throughout this KDE 3.5.x tour, I will be pointing out neat things through these colorful stickies.

(Hint: *knotes*)

(No, the transparency and shadows are not Gimp-ed in. It's the "Composite" extension of X at work. Support was built into the KDE window manager in KDE 3.4.x days.) :)

KNotes

Please enter the new name:

Clear OK Cancel

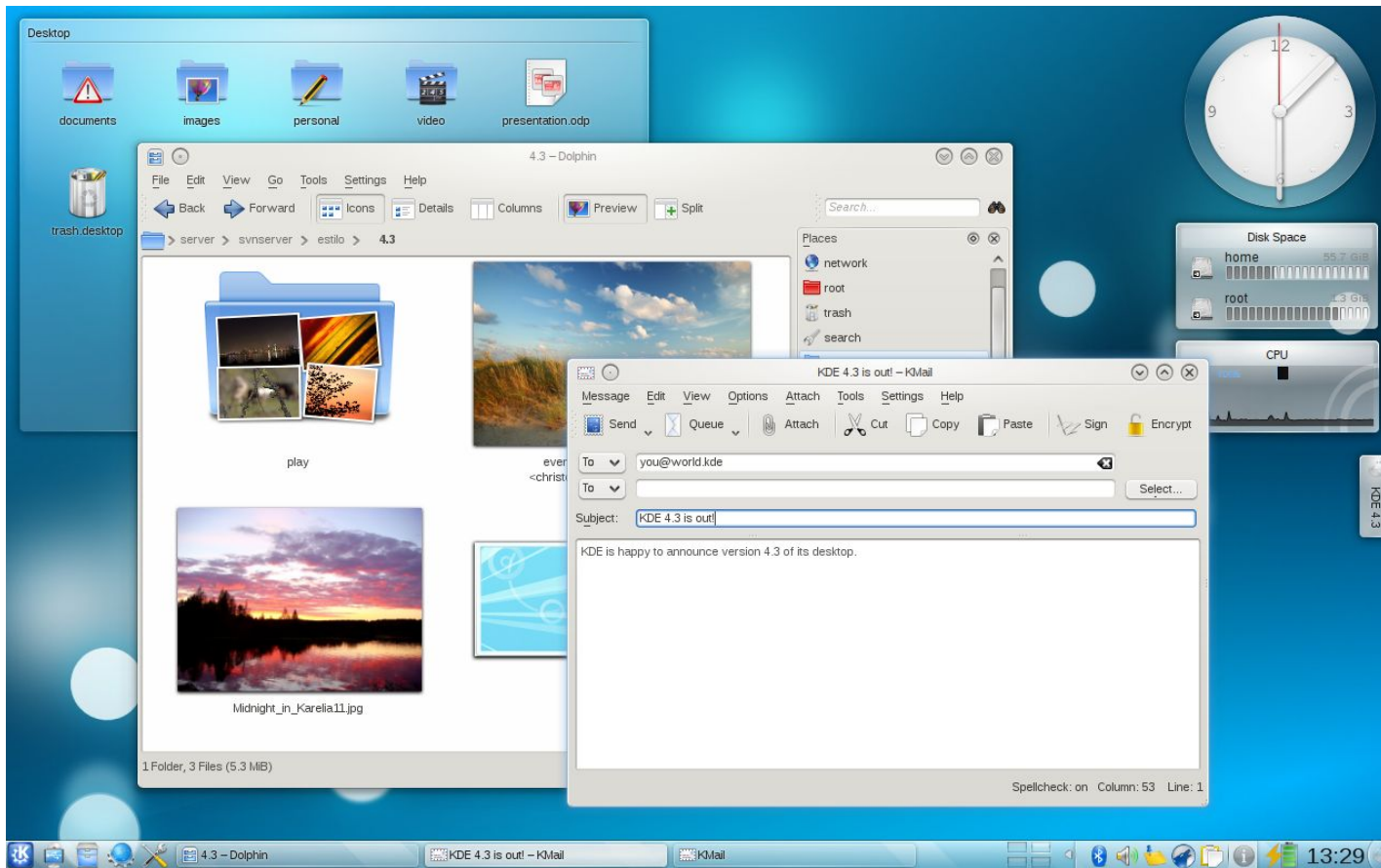
Run Command

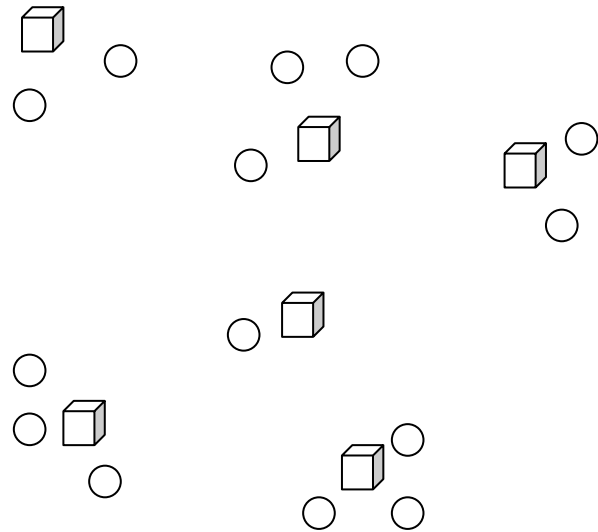
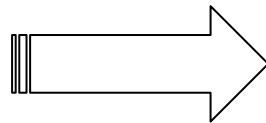
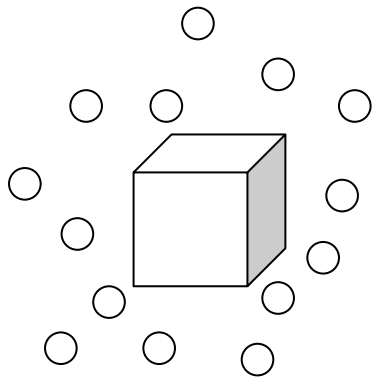
Enter the name of the application you want to run or the URL you want to view

Command: knotes

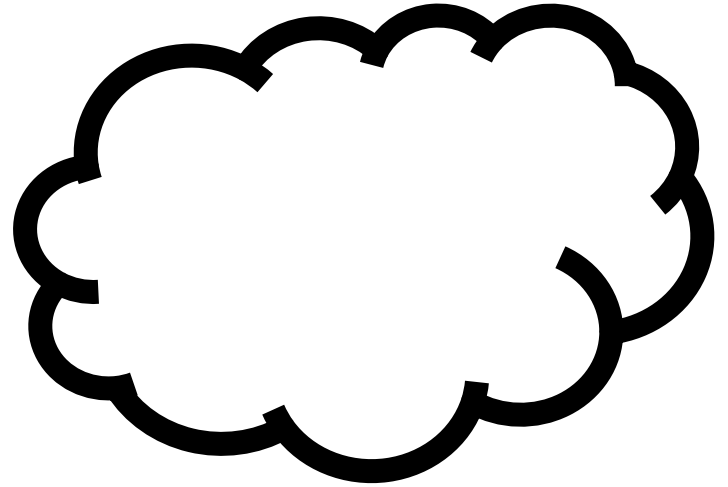
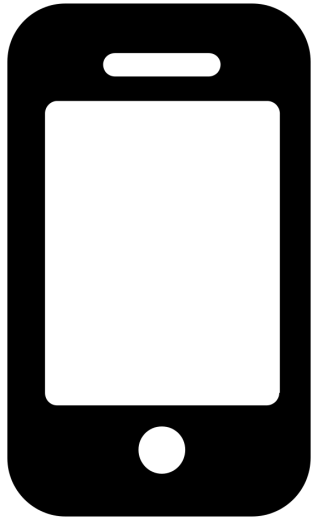
Options >> Run Cancel

KSnapshot
Trash





the move from svn to git



the world around us is changing

We no longer had
compelling answers

Why are we here?

What keeps us together?

Why should you join?

Issues we faced

- Lack of guiding principles and references for decision making
- Community issues
- Lack of common vision to strive for
- Hard time recruiting new people
- Public perception

Evolving KDE

Bring clarity and understanding a few fundamental questions:

- Where are we?
- Where do we want to go?
- How do we get there?



**Evolving KDE
announcement + survey**

April 2015

**Academy keynote and
discussion**

August 2015

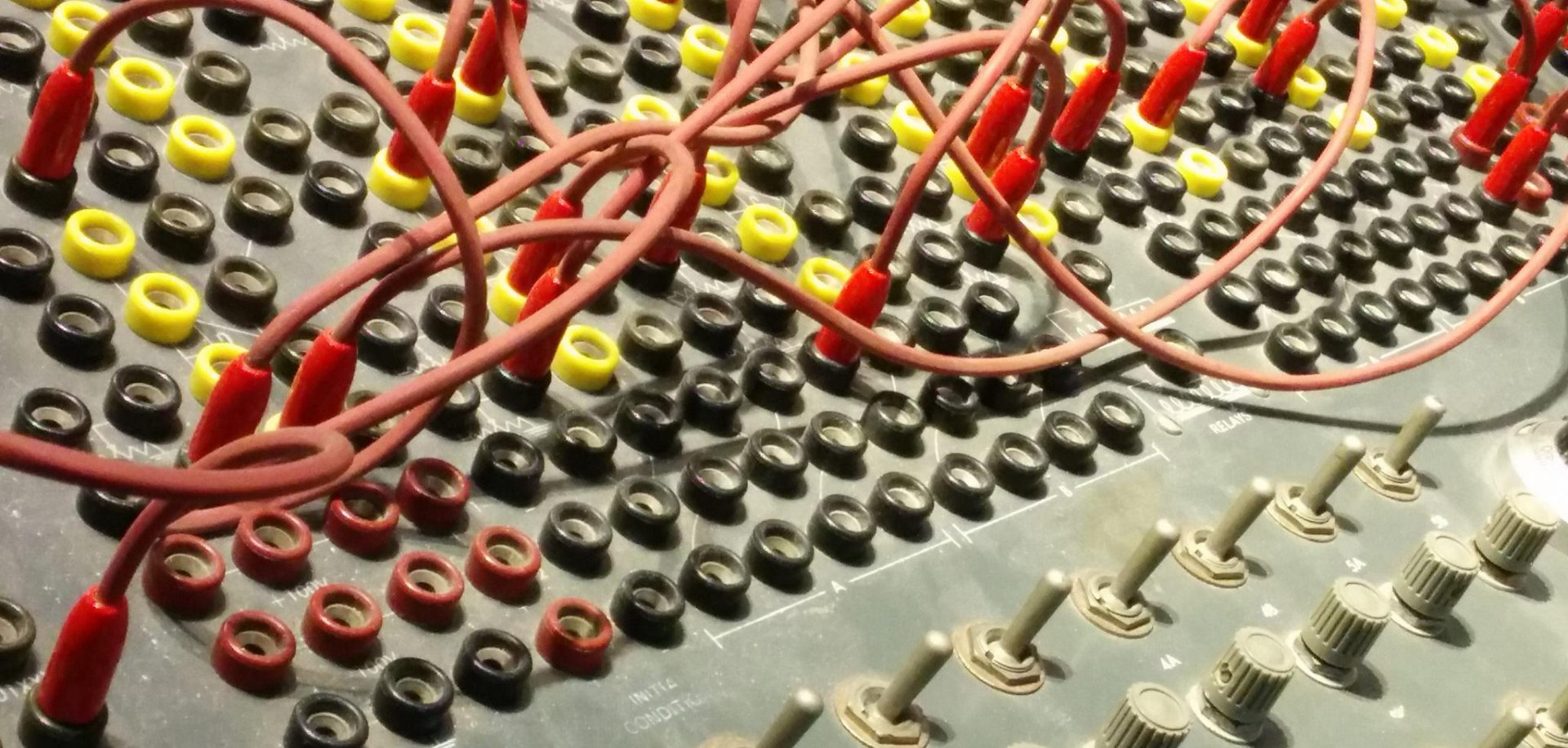
**Survey results +
recommendations**

July/August 2015



Great community

“There is a sense of working for the greater good that drives the community. It is welcoming and friendly, and able to integrate people from very different backgrounds and cultures. For me, it represents the ideal of what a Free Software community should be.”



Great technology



Impact



User Freedom



Scratching an itch



Flip bits not burgers
GSoC Student Guide

Mentor and
Org Admin Guide

Learning

“The wide variety of people involved, in the past years - it did teach me to see the world in different ways.”



Time and energy



Skills, tutorials, entry points



Vision, strategy and focus

“While we are not always moving in the same direction, we always want to move "forward".”

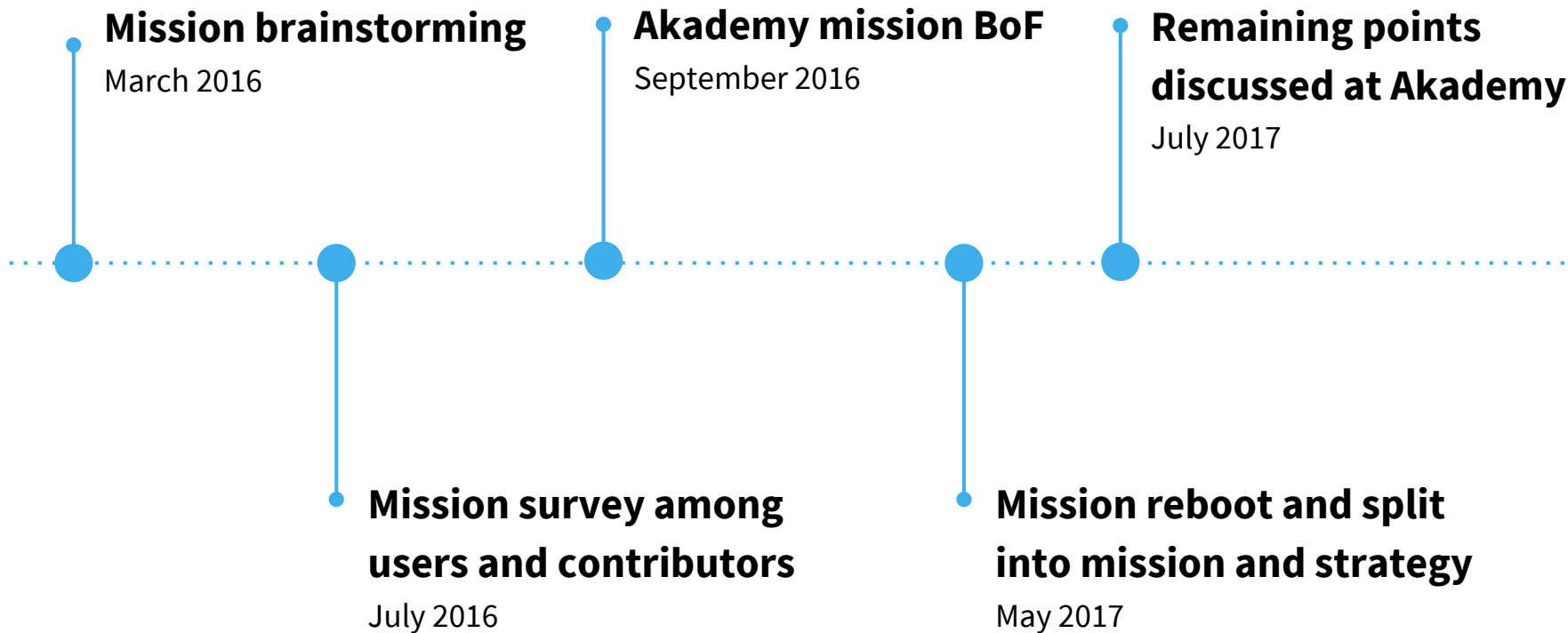
Start vision discussion

August 2015

Vision announced

April 2016

"A world in which everyone has control over their digital life and enjoys freedom and privacy."



To fulfill our Vision, KDE has taken on the mission to:

- create software products which give users control, freedom and privacy
- provide users with excellent user experience and quality
- enable users regardless of their location, background, abilities, operating system and device
- promote the Free and Open-Source ecosystem

A horizontal timeline with a dotted blue line. Four milestones are marked with blue circles. The first and third milestones have vertical lines extending upwards to their respective text blocks. The second and fourth milestones have vertical lines extending downwards to their respective text blocks.

Goal proposal drafting

August/September 2017

Goal proposal voting by anyone with contributor account

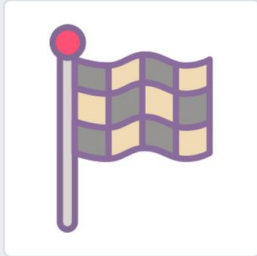
November 2016

Goal proposal discussing and refining

October 2017

3 Goals set

November 2017



0

ready for discussion 1

T6832 Improvements to Bugzilla - Making it easier and simpler

ready for voting 7

T6895 Making KDE software the #1 choice for research and academia

T6838 Modern and Global Text Input For Every User (Input Methods, Emoji, Touch, ...)

T7126 Establish KDE Technologies (Plasma, Applications, Frameworks) as the top choice for Smart Homes

T7124 KDE Leader in Design

T6875 More Power-Users => More Users

T6843 Integration with FOSS online services

T6878 Improve the Plasma Mobile platform for end-user needs

selected 3

T6831 Top-notch usability and productivity for basic software

T7050 Privacy Software

T7116 Streamlined onboarding of new contributors

Goal settings 2017

Workboard

Members

Subprojects

Manage

Top-notch usability and productivity for basic software: We want our users to love our software and enable them to do their day-to-day work hassle-free. As part of this goal we will focus on polishing our basic software so everyone will be delighted to use it.

Privacy Software: A central part of KDE's vision for the future is privacy. As part of this goal we will work on improving privacy-related features, settings and applications all over KDE's software. Once done KDE software enables and promotes privacy, which is crucial for a free and open society and protecting our users from harm.

Streamlined onboarding of new contributors: KDE can only achieve its vision if we enable many people to join our community and support us with their specific knowledge and skills – be it programming, artwork, promotion, translation, event organizing or any of the other hundreds of areas needed to make KDE successful. As part of this goal we will identify and remove barriers to entry in our documentation, infrastructure and processes.

Results

- Direction
- More community cohesion and engagement
- Great new people joining
- Significant shift in public perception
- Partnerships
- ...

Lessons learned

- You need pain and a sense of urgency
- Overcommunicate and overinvolve
- Be ready to put in the work and follow through
- You need a trusted group of people to support you

Lessons learned

- Be clear about concepts and what they mean
- Listen to people's fears and ask what's behind it
- Get data to get away from loud voices and echo chambers
- Be ready to adapt as you go

Join us!

kde.org

